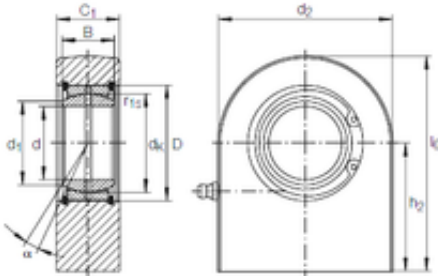




DRIVESHAFT AND BEARINGS MANUFACTURE C...

30 mm x 47 mm x 22 mm INA GF 30 DO plain bearings



GF 30 DO Bearing 2D drawings and 3D CAD models

Bearing No. GF 30 DO

Size	30x47x22 mm
Bore Diameter	30 mm
Outer Diameter	47 mm
Width	22 mm
d	30 mm
D	47 mm
B	22 mm
d1	34,2 mm
d2	65 mm
dk	40,7 mm
h2	51 mm
l6 max.	83,5 mm
r1 min.	0,6 mm
C1	28 mm
C1 max	29 mm
Angle	6 °
Weight	0,87 Kg
Basic dynamic load rating (C)	62 kN